

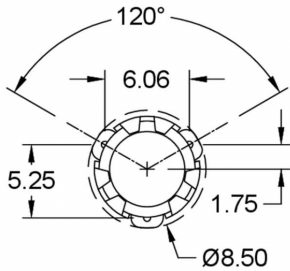
## SPECIFICATIONS

FREQ (MHz)	PART NUMBER	INSERTION LOSS (dB)	ISOLATION (dB)	VSWR	POWER (W)	OPERATING TEMP (°C)	IMPEDANCE (Ω)
2400-2500	<b>EPCI-2400-2500-SMT7</b>	0.5 max	18 min	1.3	20	- 40 to +100	50

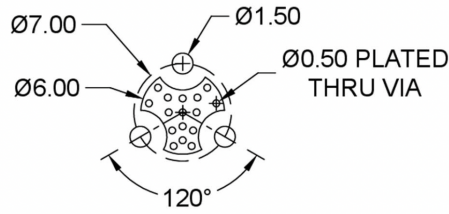
All specifications are subject to change without notice.

## MECHANICAL OUTLINE

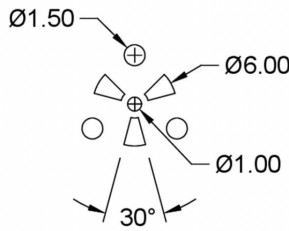
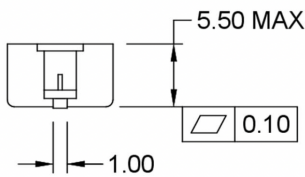
\* Dimensions are *mm*



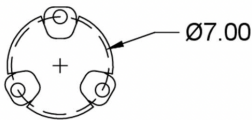
00-0023



COPPER LAYER



SOLDERMASK LAYER



RECOMMENDED FOOTPRINT

Notes:

1. Tolerances:  $\pm 0.20$ mm
2. Coplanarity specification: 0.10mm maximum
3. Soldering surfaces are Silver (Ag)
4. Reflow Temp: 260°C max for 10 seconds