

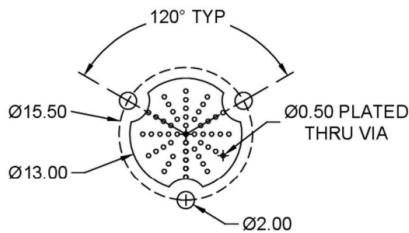
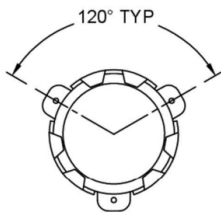
## SPECIFICATIONS

FREQ (MHz)	PART NUMBER	INSERTION LOSS (dB)	ISOLATION (dB)	VSWR	POWER (W)	OPERATING TEMP (°C)	IMPEDANCE ( $\Omega$ )
960-1215	<b>EPCI-960-1215-SMT</b>	0.5 max	20 min	1.38	100	-10 to +85	50

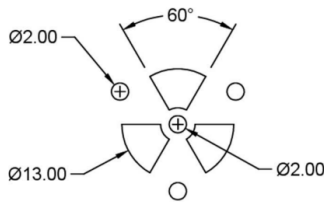
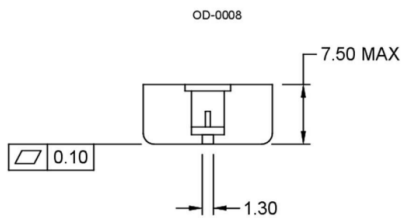
All specifications are subject to change without notice.

## MECHANICAL OUTLINE

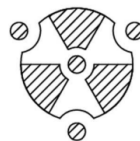
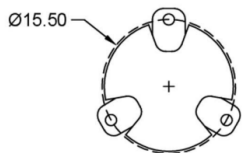
\* Dimensions are mm



COPPER LAYER



SOLDER MASK LAYER



RECOMMENDED FOOTPRINT

Notes:

1. Tolerances:  $\pm 0.20$ mm
2. Coplanarity specification: 0.10mm maximum
3. Pins and housing are silver (Ag) plated
4. Reflow Temp: 260°C max for 10 seconds