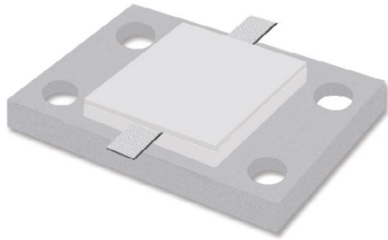


EPFR-1900-B1650-XXX

BeO Flange Resistor

REV 1.0.0

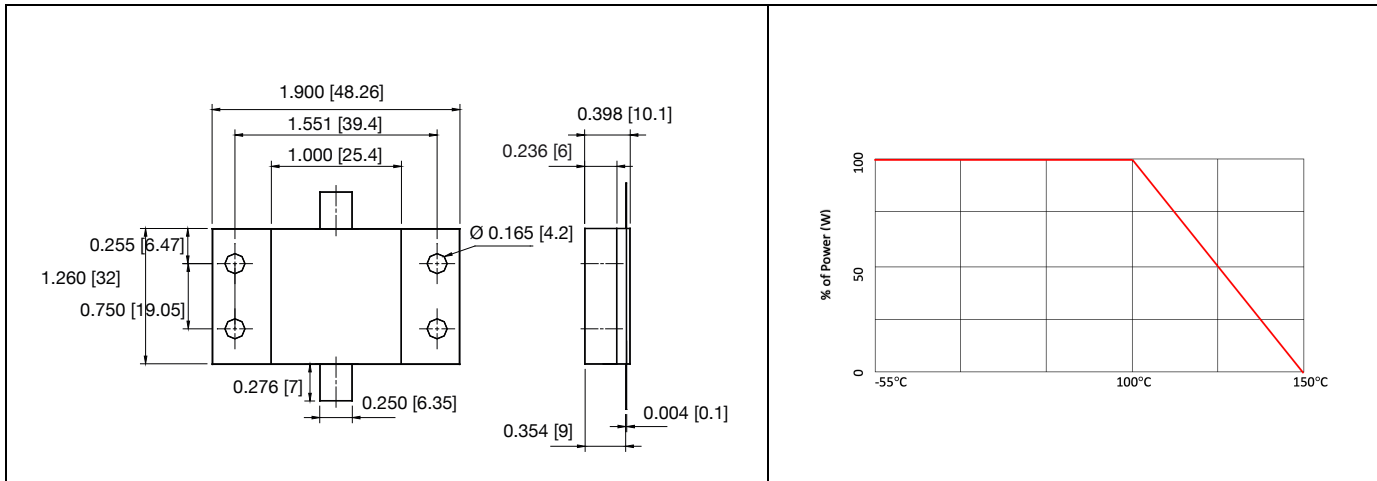


SPECIFICATIONS

- Substrate Material: BeO
- Resistive Film: Thick Film
- Tabs material /Finish: CuBe/Ag
- Flange Material: Nickel Plated Copper (Cu/Ni)
- Cover substrate: Alumina
- Frequency: DC – 1GHz
- Capacitance: 13 pF
- Input Power: 1650W
- Standards: MIL-DTL-39030
- Lead-Free, RoHS compliant

MECHANICAL OUTLINE

POWER DERATING



ORDERING INFO

Model	Material	Power (W)	Standard Resistance* (Ω)	Tolerance
EPFR	B = BeO	1650	25 50 100 200	$\pm 5\%$

*Other values available upon request

Example: EPFR-1900-B1650-100 (100 Ω , 5%)