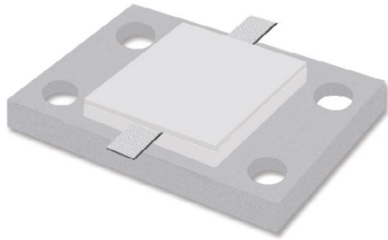


EPFR-1900-B1500-XXX

BeO Flange Resistor

REV 1.0.0

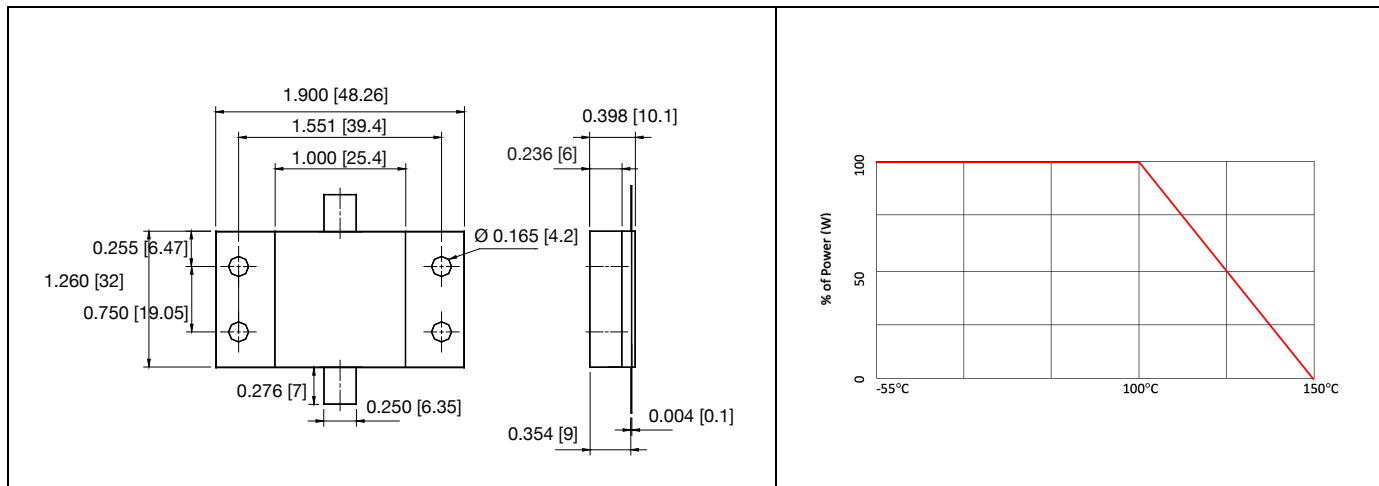


SPECIFICATIONS

- Substrate Material: BeO
- Resistive Film: Thick Film
- Tabs material /Finish: CuBe/Ag
- Flange Material: Nickel Plated Copper (Cu/Ni)
- Cover substrate: Alumina
- Frequency: DC – 1GHz
- Capacitance: 11 pF
- Input Power: 1500W
- Standards: MIL-DTL-39030
- Lead-Free, RoHS compliant

MECHANICAL OUTLINE

POWER DERATING



Dimension: inch [mm]

ORDERING INFO

Model	Material	Power (W)	Standard Resistance* (Ω)	Tolerance
EPFR	B = BeO	1500	25 50 100	± 5%

*Other values available upon request

Example: EPFR-1900-B1500-100 (100 Ω, 5%)