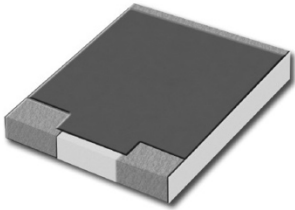


CAB-10-XX

BeO Chip Attenuator

REV 1.0.0

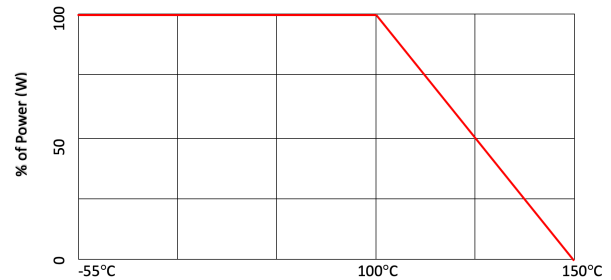
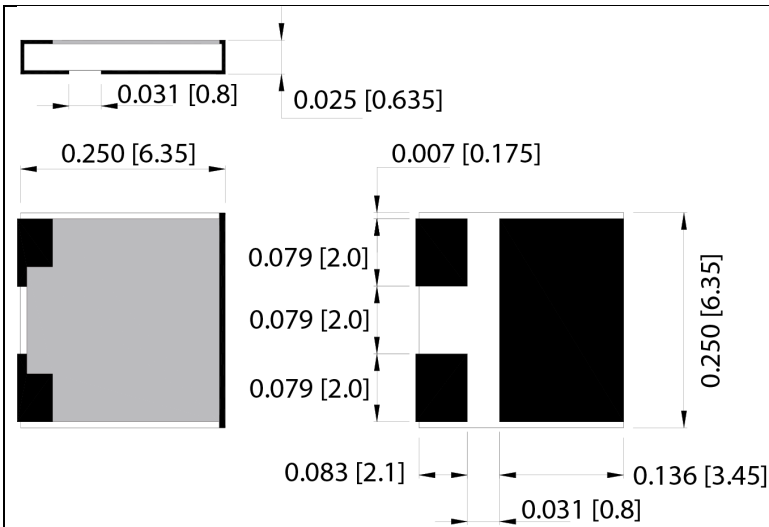


FEATURES

- Substrate Material: BeO
- Resistive Film: Thick Film
- Terminals: Tin over Nickel
- Frequency: DC – 3.5GHz
- Input Power: 10W
- Standards: MIL-DTL-3933
- Lead-Free, RoHS compliant

MECHANICAL OUTLINE

POWER DERATING



Dimension: inch [mm]

ORDERING INFO

| Attenuation* (dB) | Attenuation Accuracy (± dB) | VSWR |
|-------------------|-----------------------------|------|
| 1 | 0.2 | 1.25 |
| 2 | 0.2 | 1.25 |
| 3 | 0.3 | 1.25 |
| 6 | 0.3 | 1.25 |
| 8 | 0.3 | 1.25 |
| 10 | 0.3 | 1.25 |

*Other values available upon request

Example: CAB-10-3 (3dB)