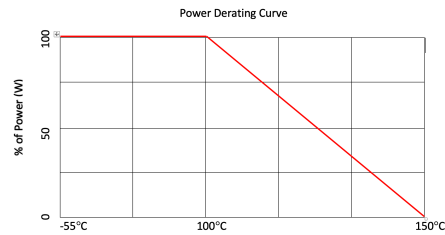
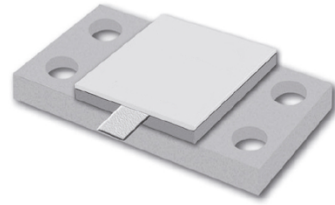


## SPECIFICATIONS

- Frequency: DC – 1 GHz
- Input Power: 800 W
- VSWR: 1.25
- Resistance:  $50\Omega \pm 5\%$
- Substrate Material: AlN
- Flange Material: Nickel Plated Copper (Cu/Ni)
- Tabs material /Finish: BeCu/Ag
- Cover substrate: Alumina
- Resistive Film: Thick Film
- Temperature: -55°C to 150°C
  
- Standards: MIL-DTL-39030
- Lead-Free, RoHS certified



## MECHANICAL OUTLINE

