

EPFT-1900-B1650-50-5

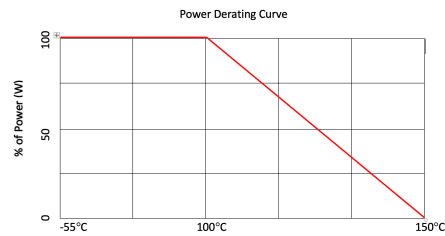
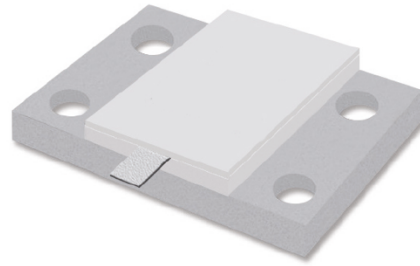
BeO Flange Termination

REV 1.0.0

SPECIFICATIONS

- Frequency: DC – 1.5GHz
- Input Power: 1650 W
- VSWR: 1.30
- Resistance: $50\Omega \pm 5\%$
- Substrate Material: BeO
- Flange Material: Nickle Plated Copper (Cu/Ni)
- Tabs material /Finish: BeCu/Ag
- Cover substrate: Alumina
- Resistive Film: Thick Film
- Temperature: -55°C to 150°C

- Standards: MIL-DTL-39030
- Lead-Free, RoHS certified



MECHANICAL OUTLINE

