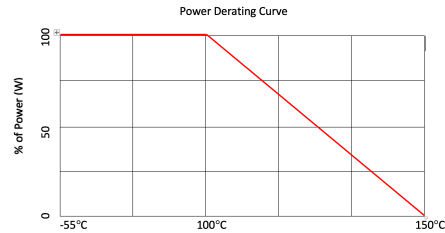
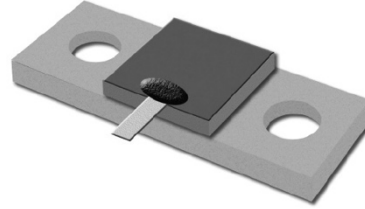


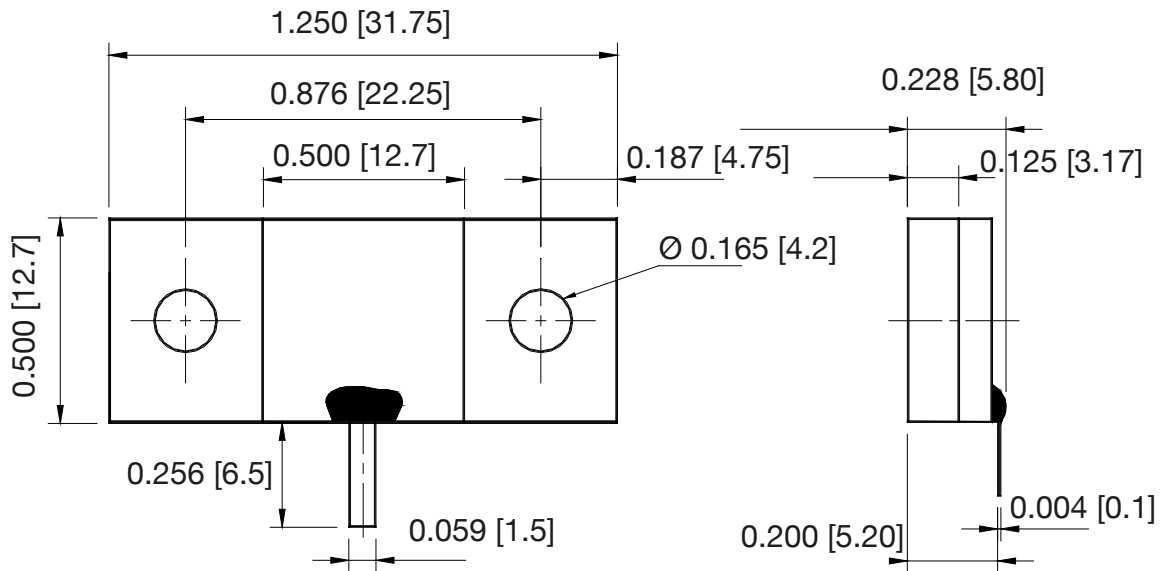
SPECIFICATIONS

- Frequency: DC – 1GHz
- Input Power: 400W
- VSWR: 1.10
- Resistance: $50\Omega \pm 5\%$
- Substrate Material: AlN
- Flange Material: Nickel Plated Copper (Cu/Ni)
- Tabs material /Finish: Ag
- Tab attachment: Brazed with epoxy encapsulation
- Resistive Film: Thick Film
- Temperature: -55°C to 150°C

- Standards: MIL-DTL-39030
- Lead-Free, RoHS certified



MECHANICAL OUTLINE



Dim: inch [mm]