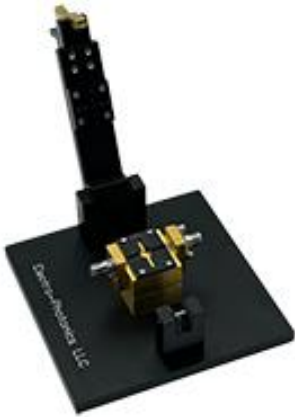


# FRFS-AT-64020-001

Test fixture for testing a Silicon Bipolar Transistor

REV 1.00



The FRFS-AT-64020-001 is a high performance custom designed RF/Microwave production type fixture for testing Avago AT-64020 Silicon Bipolar transistor. This fixture is constructed to provide repeatable measurements in a production environment. The FRFS-AT-64020-001 test fixture feature fast load/unload clamshell type cover.

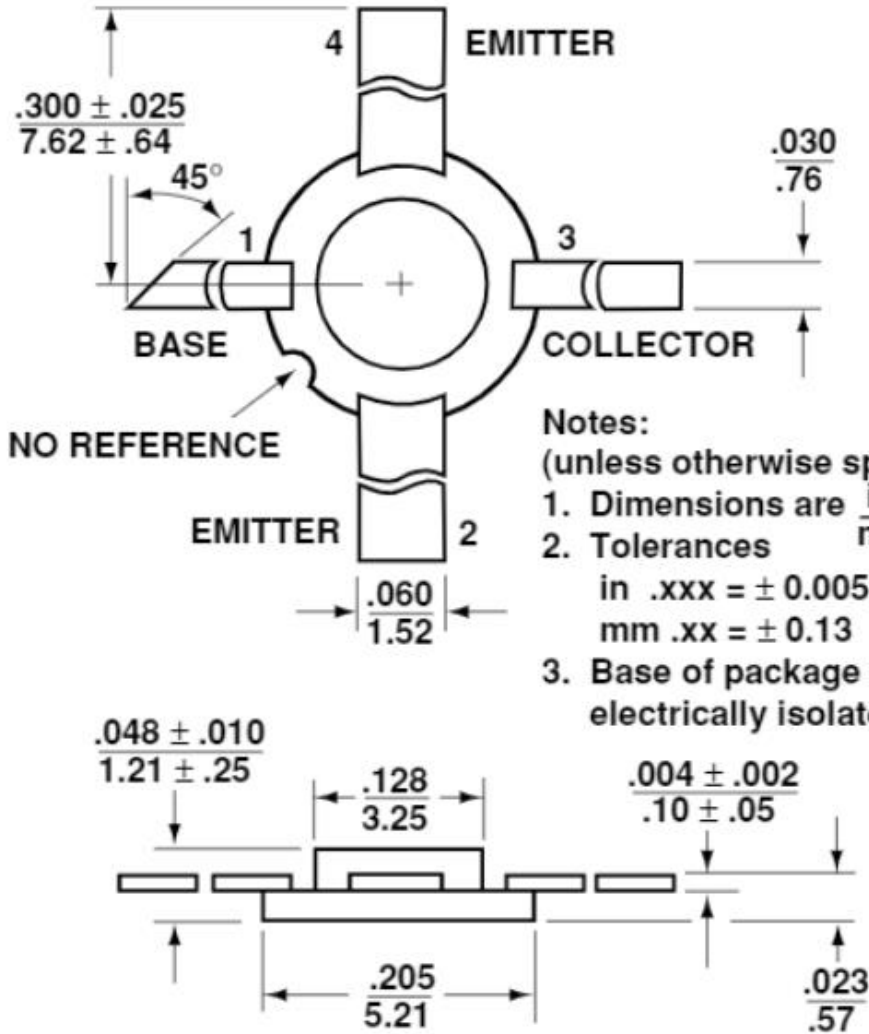
## ELECTRICAL/ MECHANICAL SPECIFICATIONS

PARAMETER	SPECIFICATION*
FREQUENCY RANGE	DC – 5 GHz
RF PORTS	2
RETURN LOSS	20 dB min
INSERTION LOSS	≤ 0.5dB (per transition)
DC PINS	0
Operating Temp:	-40 °C to + 85 °C
MATING INTERFACE	SMA JACK (FEMALE)

Electro-Photonics LLC reserves the right to modify drawings, configurations, specifications, and design at any time without prior notification.

## PACKAGE FOOTPRINT

### 200 mil BeO Package Dimensions



# FRFS-AT-64020-001



Test fixture for testing a Silicon Bipolar Transistor

REV 1.00

## CUSTOMIZATION

The FRFS-AT-64020-001 can be customized for number of similar DUT's in this or similar footprint. In addition, Electro-Photonics can design a custom solution per your requirements.

Please consult sales [sales@electro-photonics.com](mailto:sales@electro-photonics.com) to discuss customization options.

## ORDERING INFO

**FRFS - AT-64020-001**

PRODUCT CODE

FIXTURE CODE

Electro-Photonics LLC reserves the right to modify drawings, configurations, specifications, and design at any time without prior notification.