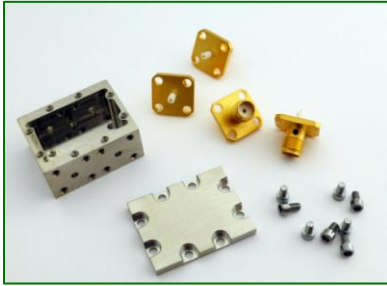


# RF4-A-SMA

4 port sma package

REV 1.0.0



## RF PACKAGE

Great for quick prototyping, this package comes with 4 high performance connectors, cover and screws. It can be used for 2 or 4 port circuits. Accepts board thickness 0.030 inch (0.762 mm).

## SPECIFICATIONS

FREQ (GHz)	PART NUMBER	INSERTION LOSS (dB)	VSWR	OPERATING TEMP (°C)
DC - 6	RF4 - SMA	< 0.5	1.2	-40 to +85

TABLE 1: TYPICAL SPECIFICATIONS

Unit tested with thru line on RO4350B at 25°C. Specifications subject to change without notice.

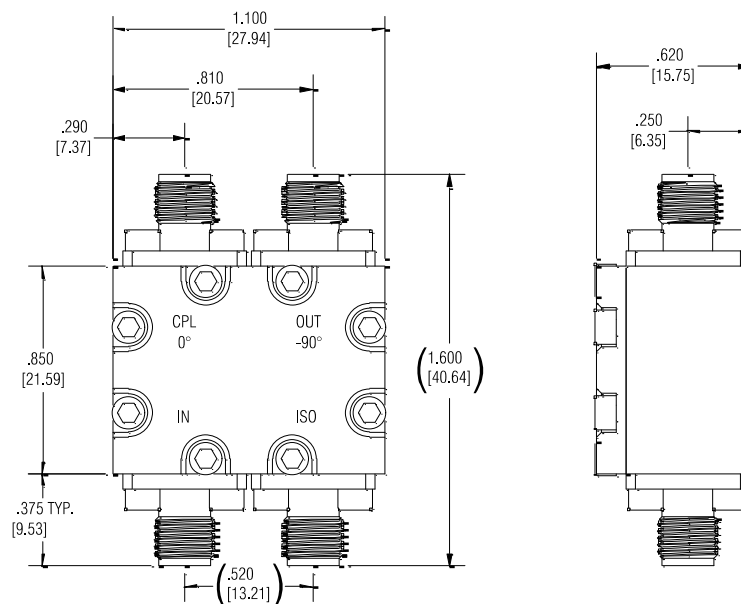
## MECHANICAL OUTLINE

\* Dimensions are *inches [millimeters]*.

Cavity dimensions: L x W x H = 0.860 x 0.600 x 0.269 inch (21.84 x 15.24 x 6.83 mm)

Material: Aluminum

Finish: Nickel plating

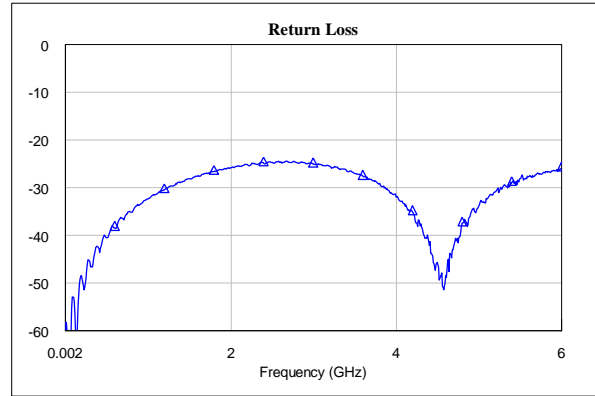
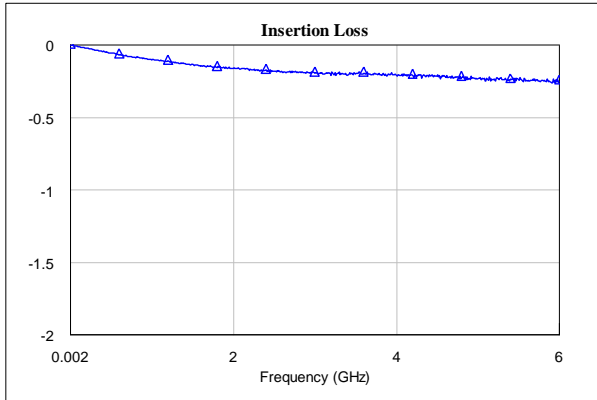


# RF4-A-SMA

4 port sma pacage

REV 1.0.0

## TYPICAL PERFORMANCE



## ORDERING INFO

**R F 4 - A - S M A**

①

②

③

①

**PRODUCT CODE**

RF Package

②

**FREQUENCY**

A = DC - 6GHz

④

**Connector type**

SMA = SMA